

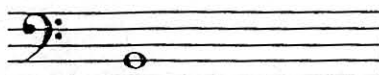
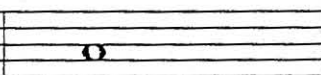
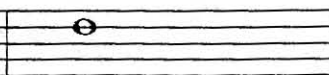
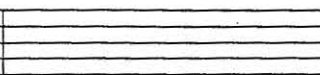


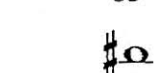
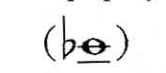

	1	2	3	4	5	6	7
Staff 1	$\flat\flat$	\flat	$\flat\flat$ $\sharp\flat$	\flat	\flat $\sharp\flat$	\flat	\flat
Staff 2	$\flat\flat$ $\sharp\flat$	\flat	$\flat\flat$ $\sharp\flat$	\flat	\flat	$\flat\flat$ $\sharp\flat$	\flat
Staff 3	\flat	\flat	$\flat\flat$ $\sharp\flat$	\flat	$\flat\flat$ $\sharp\flat$	\flat	\flat
Staff 4	\flat	$\flat\flat$ $\sharp\flat$	\flat	\flat	$\flat\flat$ $\sharp\flat$	\flat	$\flat\flat$ $\sharp\flat$
Staff 5	$\flat\flat$	\flat	$\flat\flat$ $\sharp\flat$	\flat	$\flat\flat$ $\sharp\flat$	\flat	\flat
Staff 6	\flat	\flat	$\flat\flat$ $\sharp\flat$	\flat	$\flat\flat$ $\sharp\flat$	\flat	\flat
Staff 7	$\flat\flat$	\flat	$\flat\flat$ $\sharp\flat$	\flat	$\flat\flat$ $\sharp\flat$	\flat	\flat
Staff 8	$\flat\flat$	\flat	$\flat\flat$ $\sharp\flat$	\flat	$\flat\flat$ $\sharp\flat$	\flat	\flat

Pitch Tendencies & Adjustments

Trombone

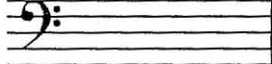
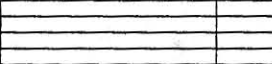
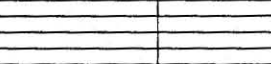

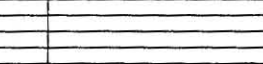

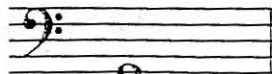
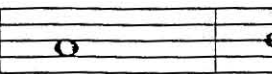
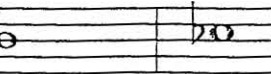
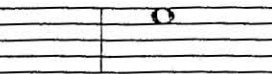
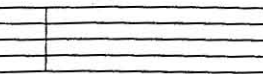

F = Flat
S = Sharp
V = Very

(Notes not addressed are generally acceptable)

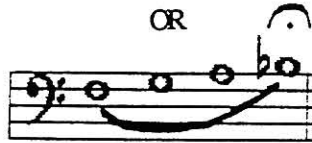
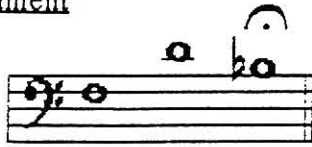
				
Pitch Tendency	S	S	S	F
Adjustment	Use trigger and lower 2nd position	Use trigger and lower 1st position. (May still be very sharp if trigger is not properly tuned.)	Lower 1st position	Use 4th position
		 		
	VS	VF	VF	S
	Lower 1st position	Raise 3rd position	Raise 2nd position	Lower 1st position

Pitch Tendencies & Adjustments

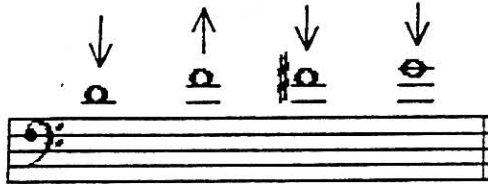
Tuba

						
Pitch Tendency	VVS	VS	S	VVS	VS	S
Adjustment	Use 2nd & 4th valve Drop jaw	Use 4th valve	Use 3rd valve or pull 1st valve slide	Use 2nd & 4th Drop jaw	Use 4th valve	Use 3rd valve or pull 1st slide
						
	S	F	F	S	VS	F
	Use 3rd valve or pull 1st slide	Use 1st & 3rd or 4th valve	Use 1st and 2nd	Pull 1st slide	Use 3rd valve	Play open

TROMBONE

Tune The Instrument

When tuning to one note only, approach the tuning note from below.

Intonation Discrepancies and Tendencies:

Beware of the tendency to play sharp on fifth, sixth and seventh positions and flat on second and third positions.

Causes and Remedies for Bad Notes:

- Embouchure** -Center the tone. The accurate brass player develops a muscular memory.
Syllables.
-TEE sharpen the pitch.
-TOO and TAH flatten the pitch.
- Dynamics** -Crescendos may blow sharp. To correct: Maintain a firm embouchure throughout crescendo.
-Diminuendos may blow flat. To correct: Maintain sufficient breath support throughout the diminuendo
- Slide** - Because of the nature of the trombone slide, the trombone is considered the most flexible.
-The trombonist should adjust the pitch with the slide as much as possible.
-The trombonist should be aware of the tendency to play sharp on fifth, sixth and seventh positions and flat on second and third positions.
- F-Attachment** - After adjusting the B flat tuning slide, then match the F slide to the B flat on Fourth line F.
- Listen** -Check your buzzing of the chromatic scale on the strobe-tuner.
-Also play long tones and scales frequently check with the tuner.