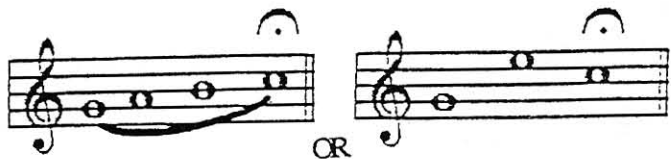


Harmonic Series, Trumpet (2nd Partials)

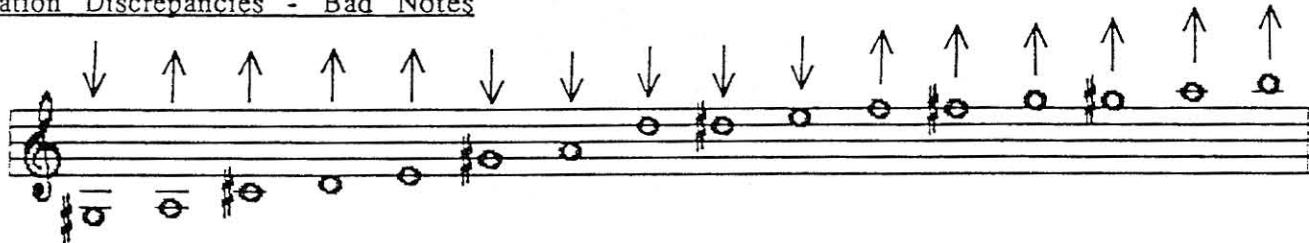
The image displays a musical score for the 2nd partials of a trumpet's harmonic series. It consists of nine staves. The first seven staves show the notes of the series in ascending order: G2, Bb2, B2, C3, D3, E3, and F3. The eighth staff shows the notes with handwritten fingering patterns: 0, 2, 1, 12, 23, 13, and 123. The ninth staff shows the notes with a circled note (B2) and a handwritten '2' below it, indicating a specific fingering or technique for that note. The notes are written on a grand staff (treble and bass clefs).

Staff	1	2	3	4	5	6	7
Notes	G ₂	B ^b ₂	B ₂	C ₃	D ₃	E ₃	F ₃
Fingering	0	2	1	12	23	13	123

Bb TRUMPET

Tune The Instrument

When tuning to one note only play G to C with a soft tongue. Sustain the last note.

Intonation Discrepancies - Bad NotesCauses and Remedies for Bad Notes:

Consider the following generalizations for valve combination fingerings

- 1-2 valve combination is moderately sharp.
- 1-3 valve combination is very sharp.
- 1-2-3 valve combination extremely sharp.
- 2-3 valve combination is moderately flat.

Embouchure - Center the tone - The vibration frequency must agree with the partial to be played, if not the player may "bobble" the note.

- The accurate player (brass) must develop a muscular memory. (The player must listen and think as he or she plays)

Syllables

- Sharp notes may be lowered with TOO or TAH with flat tongue.
- Flat notes may be raised with TEE syllable and arched tongue.

Endurance

- Tune when the embouchure muscles are properly warmed up.
- As one plays, pitch generally will go sharp.
- Playing when over-tired may cause pitch to appear flat.

Auxiliary Fingerings.

- Experiment with alternate fingerings that may work on your instrument.
- Adjust and utilize trigger mechanisms on sharp notes.

Dynamics-

- Crescendos may blow sharp. To correct: Maintain a firm embouchure throughout crescendo.
- Diminuendos may blow flat. To correct: Maintain sufficient breath support throughout the diminuendo.

Listen - To good music, develop your ear.

Trigger - Adjust and use trigger mechanisms on sharp notes.

Mouthpiece - Match the mouthpiece with the instrument.